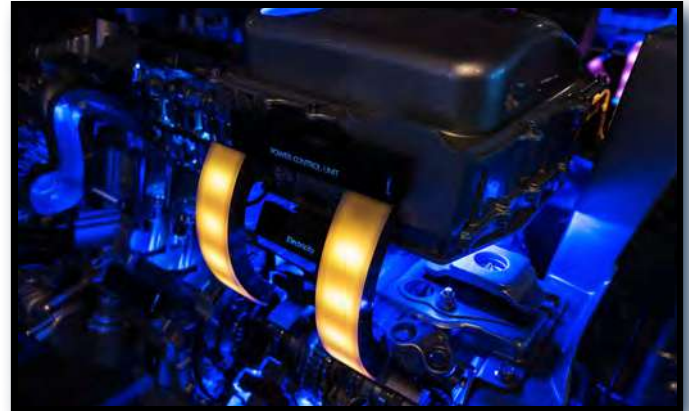




Instrument Panel

- Surface Protection
- ECU Thermal Management & Electrical Insulation
- IP Seals
- Spring Contacts
- EMI/RFI Shielding & Absorption in Telematics Systems
- Optically Clear Adhesives for Displays
- Thermal Conductors & Shields
- Phase Change Cooling
- Natural Convection Cooling
- PCB Cooling
- Acoustic Insulation
- Touchscreen Display Conductivity & Protection
- Bonding Systems
- Display Gaskets for Infotainment Systems



Engine Compartment

- HVAC System
- Environmental Seals
- Engine Heat Shields
- Motor Liquid Cooling Solutions
- Hood Seals
- Vibration Absorption
- O-Rings
- Grommets
- Formed Hoses
- Cabin Thermal Insulation
- Bushings
- Metal Bracketing
- Isolators
- Thermal Interface Materials & Gap Pads
- Heat Exchangers/Radiators
- Battery Cooling with High Performance Systems
- Fans & Air Cooling Systems



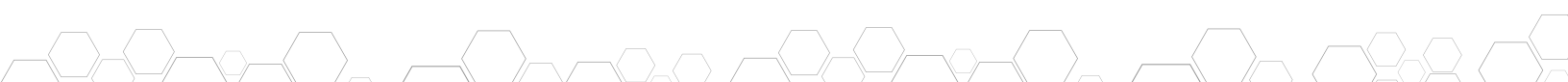
Interior & Finishing

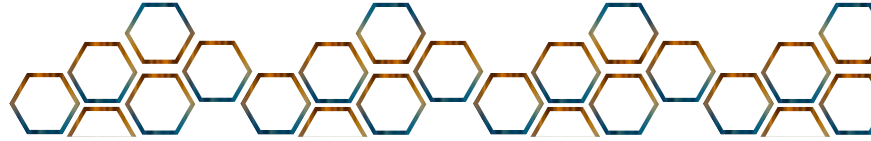
- Wireless Connectivity
- Interior Seals
- Light Diffuser Films
- BSR/NVH
- HVAC Systems
- Rubber Grips & Knobs
- Surface Protection
- HMI & Display Films
- Shock Absorption
- Attachment Systems
- Pillar Molding
- Adhesive Systems
- Bin Liner
- Interior Trim



Exterior & Finishing

- Mirror & Sensor Tapes/Films
- Window & Trunk Seals
- Heat Shields
- Wind Noise Suppression
- Molded Plastic
- Primary & Secondary Door Seals
- Light Assembly Gaskets
- Attachment Systems For: Body Side Molding Exterior Trim Emblems & Nameplates



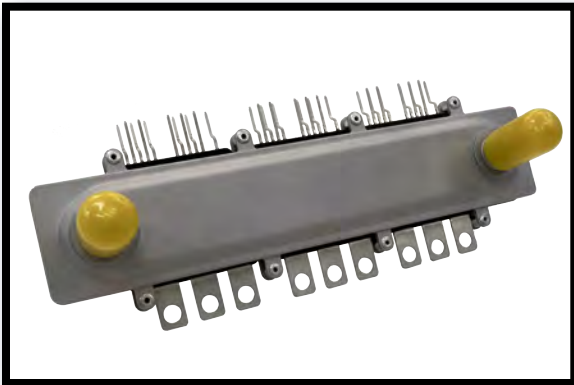


AREAS OF EXPERTISE



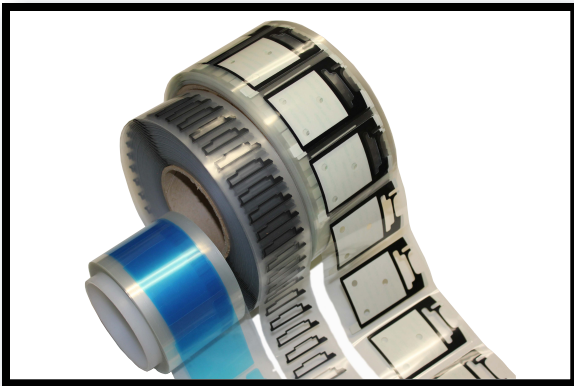
SEALING

- Bonding & Adhesives
- Polymer Extrusion
- Custom Hoses
- Custom Moldings
- Display Components
- Window Assemblies
- Gaskets & Seals
- O-Rings
- Graphic Overlay & Labels
- Liquid Management
- Airflow Management
- Optically Clear Adhesives



THERMAL

- Graphite Technologies
- Liquid Cooling
- Thermal Interface Materials
- Two Phase Cooling
- Thermal Modeling Software
- Heat Exchangers
- Liquid Cold Plates
- Air Cooling
- Heat Sinks
- Vapor Chambers
- Heat Spreaders
- Thermosiphons



PROTECTION

- Wear & Interior Protection
- Airflow Management
- Thermal Insulation
- SOLIMIDE® Foam
- Die Casting
- Heat Shielding
- Protective Tapes & Films
- Electrical Insulation
- EMI/RFI Shielding
- Noise, Vibration & Harshness
- Stamped Dampers
- Dust Ingress & Sealing
- Acoustic Insulation

CERTIFICATIONS & QUALITY SYSTEMS

- IATF16949
- ISO 9001
- ISO 14001
- ISO 13485
- RoHS Compliance
- UL Recognized
- Cleanrooms Class 100-100K
- ITAR
- AS 9100
- APQP
- PPAP
- FMEA
- SPC
- MSA
- GR&R

