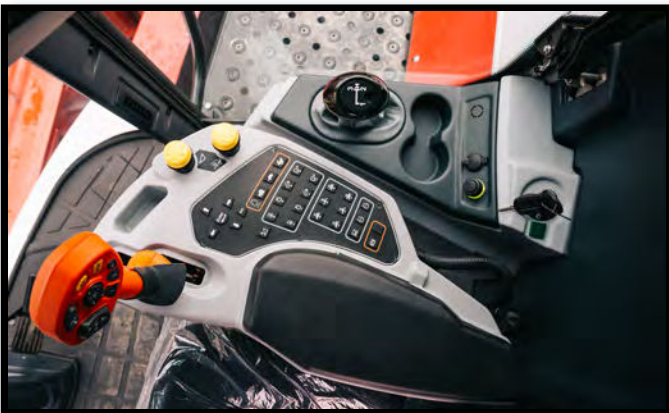


Exteriors & Finishing

- Acoustic Insulation
- Bonding Systems
- Display Gaskets for Infotainment Systems
- ECU Thermal Management & Electrical Insulation
- EMI/RFI Shielding & Absorption in Telematics Systems
- IP Seals
- Natural Convection Cooling
- Optically Clear Adhesives for Displays
- PCB Cooling
- Phase Change Cooling
- Spring Contacts
- Surface Protection
- Thermal Conductors & Shields
- Touchscreen Display Conductivity & Protection

Engine Compartment

- Battery Cooling with High Performance Systems
- Bushings
- Cabin Thermal Insulation
- Engine Heat Shields
- Environmental Seals
- Fans & Air Cooling Systems
- Formed Hoses
- Grommets
- Heat Exchangers/Radiators
- HVAC System
- Hood Seals
- Isolators
- Metal Bracketing
- Motor Liquid Cooling Solutions
- O-Rings
- Thermal Interface Materials & Gap Pads
- Vibration Absorption



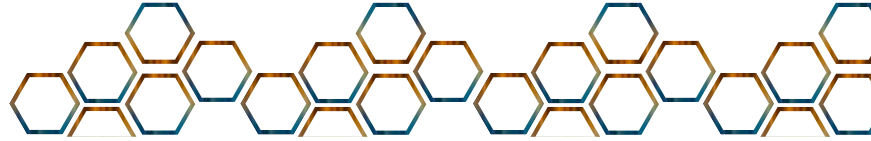
Cabin Sub-Assemblies & Interior

- Bellows & Shifter Boots
- Custom O-Rings
- Door Seals & Hood Seals
- Encapsulated Graphite
- Fans & Blowers
- Floor mats & Step Tread
- Fully Integrated Display Solutions
- Keypad & Button Covers
- LCD Display Interface Adhesive Assemblies
- Particle Filters / Guards
- Polymeric Insulators
- Shrouds (Fan, Radiator)
- Transport Heat Pipe Assemblies

Braking & Traction

- Air Baffles
- Air Ducts
- Air Filters
- Bushings
- Ceramic/Thermally Conductive Insulators
- Foam Solutions
- Formed Hoses
- Heat Shields
- Isolators & Fittings
- LectroShield
- Molded Mount Bumpers
- SOLIMIDE® Foams
- Vibration Isolators



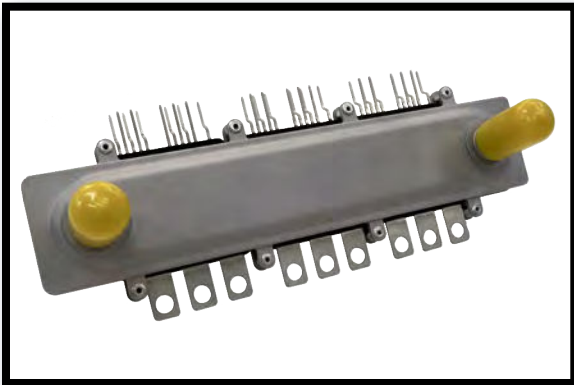


AREAS OF EXPERTISE



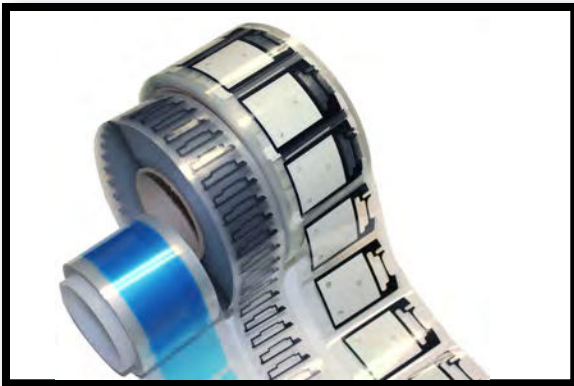
SEALING

- Bonding & Adhesives
- Polymer Extrusion
- Custom Hoses
- Custom Moldings
- Display Components
- Window Assemblies
- Gaskets & Seals
- O-Rings
- Graphic Overlay & Labels
- Liquid Management
- Airflow Management
- Optically Clear Adhesives



THERMAL

- Graphite Technologies
- Liquid Cooling
- Thermal Interface Materials
- Two Phase Cooling
- Thermal Modeling Software
- Heat Exchangers
- Liquid Cold Plates
- Air Cooling
- Heat Sinks
- Vapor Chambers
- Heat Spreaders
- Thermosiphons



PROTECTION

- Wear & Interior Protection
- Airflow Management
- Thermal Insulation
- SOLIMIDE® Foam
- Die Casting
- Heat Shielding
- Protective Tapes & Films
- Electrical Insulation
- EMI/RFI Shielding
- Noise, Vibration & Harshness
- Stamped Dampers
- Dust Ingress & Sealing
- Acoustic Insulation

CERTIFICATIONS & QUALITY SYSTEMS

- IATF16949
- ISO 9001
- ISO 14001
- ISO 13485
- RoHS Compliance
- UL Recognized
- Cleanrooms Class 100-100K
- ITAR
- AS 9100
- APQP
- PPAP
- FMEA
- SPC
- MSA
- GR&R

