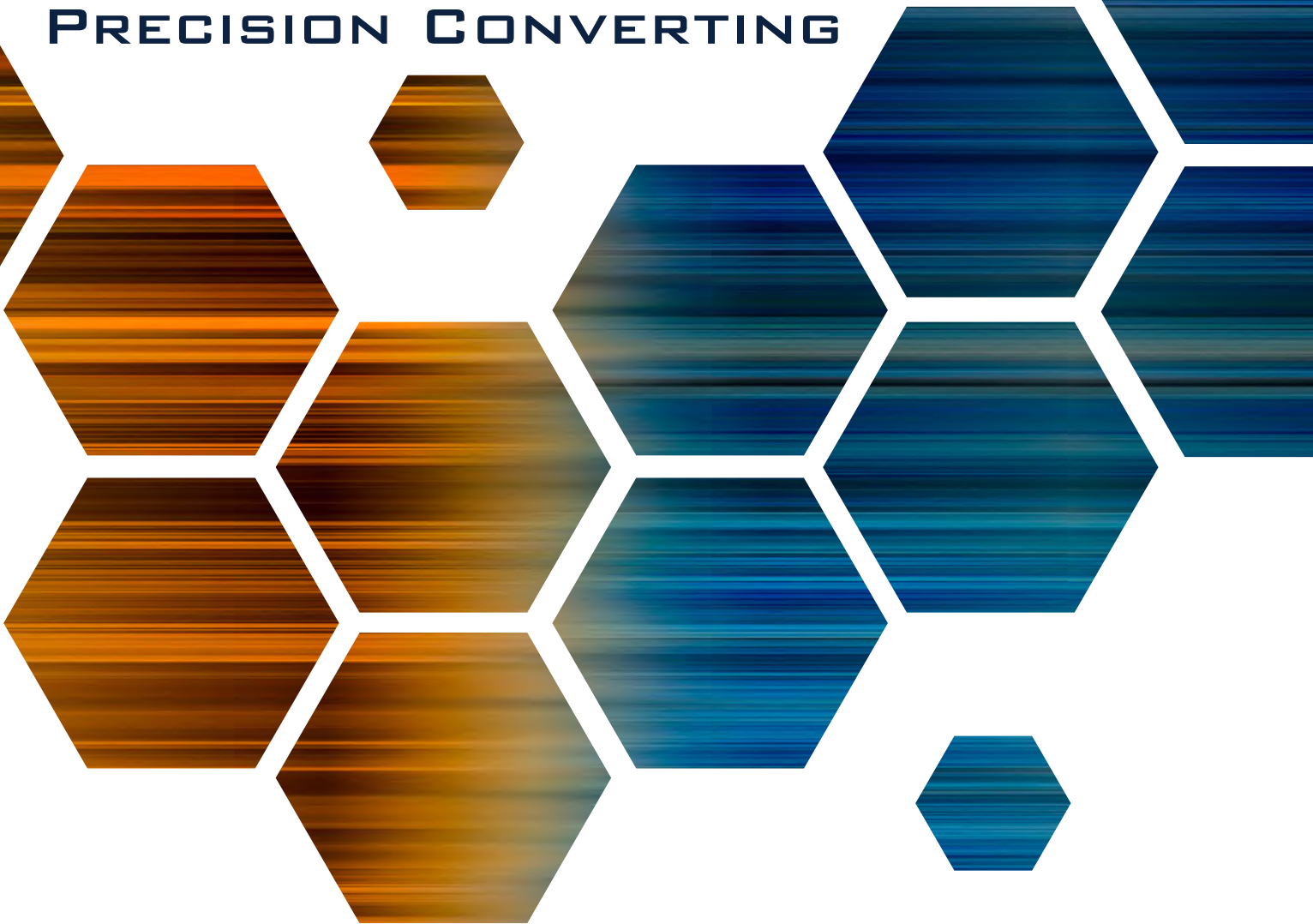


# BOYD

## CORPORATION

[WWW.BOYDCORP.COM](http://WWW.BOYDCORP.COM)

PRECISION CONVERTING



One Company, Many Solutions

### Precision Converting Solutions

**Boyd has decades of expertise in developing custom solutions** through the design and conversion of flexible materials using the latest precision converting technology.

**We turn concepts into components.** From design to manufacturing to packaging and logistics, Boyd provides full-service solutions that transform your innovative ideas into reality.



#### Capabilities

Boyd supports the needs of low to high volume production with core competencies in a wide variety of traditional and innovative converting technologies.

#### Technologies

- Rotary & Flatbed Die Cutting
- CNC Cutting
- Laser Cutting
- Water Jet Cutting
- Ultrasonic Welding
- Laminating
- Slitting
- Splitting
- Precision Knife Plotter Cutting
- Multi-Axis Routering
- Surface Treatments
- Subassembly
- Ultra-Tight Tolerances

#### Applications

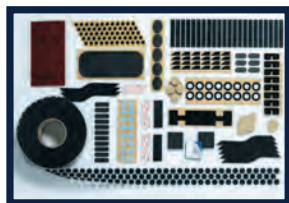
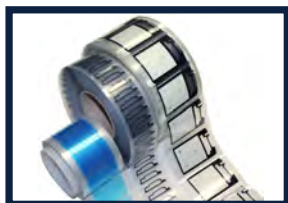
- Adhesive Die Cut Parts
- Display Components
- Gaskets & Seals
- Vibration Dampening
- EMI/RFI Shielding
- Insulators
- Thermal Management
- Foil & Thin Films
- Surface Protection
- Medical Wearables & Disposables
- Optical Film & Adhesives
- Complex Multi-Stack Laminations

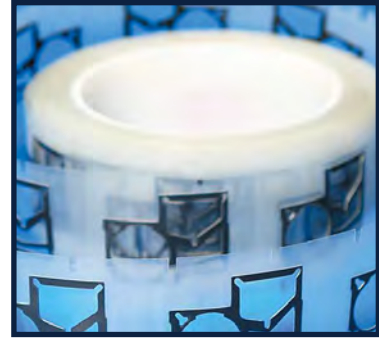
#### Quick-Turn Prototyping

Our CNC Laser, Knife, and Waterjet die-less prototyping systems, with Flashnesting software, allow us to quickly convert drawings to prototype parts without the need of tooling. Same or next day samples often achievable.

#### Efficient Rotary Die Cutting

Our advanced rotary die cut converting core competencies have become a form of industrial artwork with ultra-tight tolerances (zero-gap tolerances), superb clean room manufacturing environments and innovative raw material combinations that are critical to the high design and manufacturing demands of advanced product applications.





## Providing Solutions To Complex Problems Through Precision Converting

**Boyd's fully integrated, in-house precision converting capabilities** are available across multiple facilities with expertise in providing competitive solutions to virtually any industry. Precision converting sales teams and engineers partner closely with your design team to solve complex manufacturing and assembly problems that reduce your overall costs.

**Boyd's expertise as a precision converter** and die cut fabricator delivers to you reliable and consistent production parts spanning environmental gaskets and seals, bonding systems, EMI/RFI shielding and absorbers, electrical insulation, electrical conduction, thermal insulation, acoustic insulation, thermal conduction, cushioning, shock absorption, vibration damping, lens protection, complex adhesive laminations, optical films, graphic overlays, labels and electromechanical subassemblies.

### Quality & Processing

Boyd puts quality first. We strive to provide you with the highest quality products and services in a timely manner, all while adhering to environmental, government and social responsibility standards. Our production facilities have multiple certifications to serve a wide variety of markets including ISO 9001, ISO 14001, ISO 13485, IATF 16949 and AS9100 specifications - ensuring the highest levels of quality management.

### Clean Room Capabilities

Boyd converts a wide range of electronic, transportation, communication, security, durable medical and other healthcare components. To exceed cleanliness requirements of sensitive or highly controlled designs and functionality, Boyd maintains dedicated presses for material conversion in a clean room environment. At Boyd, we have the expertise, technology and environmental processes to meet these needs with clean room environments certified from Class 100 to Class 100K.

### Global Capacity

With production facilities strategically located around the world (North America, Europe and Asia), Boyd is uniquely positioned to support your needs. No matter where you are designing or building products, we are there to support with design assistance, clean room converting, immediate customer service, local warehousing, and just-in-time delivery and logistics services efficiently and in close proximity to your R&D and production location.

## Global Presence



### Corporate Headquarters

5960 Inglewood Dr. Suite 115  
Pleasanton, CA 94588  
+1(888)244-6931

## Precision Converting Facilities

Boyd Corporation is a trusted partner for quality precision converting manufacturing. With over 90 years of customer-focused performance, Boyd has evolved as a market leader in environmental sealing and thermal management solutions critical to products that keep the world running.

Arkansas • California • China • Georgia • Germany • India • Indiana • South Korea  
Michigan • Oregon • South Carolina • Tennessee • Thailand • Vietnam • Wisconsin

## Boyd America

Our highly-trained North American support teams are here to assist with your program management requirements, material selections, product design, commodity management, application engineering and raw material or finished goods testing. Our cross-functional team can be tailored to your unique needs and will closely monitor your initiatives and new programs, while ensuring tight management of new product introduction, volume production and delivery deadlines.

Arkansas • California (4) • Connecticut • Georgia • Indiana • Massachusetts • Michigan  
New Hampshire New York • Oregon • Pennsylvania • South Carolina • Tennessee • Wisconsin

## Boyd Europe

Our engineers have decades of research and develop experience to provide European customers with the highest quality custom technologies. Boyd excels in rapid prototyping and regional design services deployed for global mass production. We offer sophisticated order management that caters to your custom EDI or supply portal needs with just-in-time stocking and delivery support. Boyd delivers high touch customer service in a global environment, optimized for your complex value chains.

Italy • Germany • United Kingdom

## Boyd Asia

With operations spread across Asia, Boyd's global manufacturing footprint, engineering design centers and clean room capabilities from Class 100 to Class 100,000 provide consistent quality, speed and cost-effectiveness with centers of excellence and quality management systems to meet the unique needs of highly diversified industries, providing Asia-Pacific customers as well as global OEMs reliability throughout the product life cycle.

BacNinh • Bangalore • Chonburi • Gujarat • Gumi • New Taipei • Noida • Shanghai • Shenzhen • Wuxi